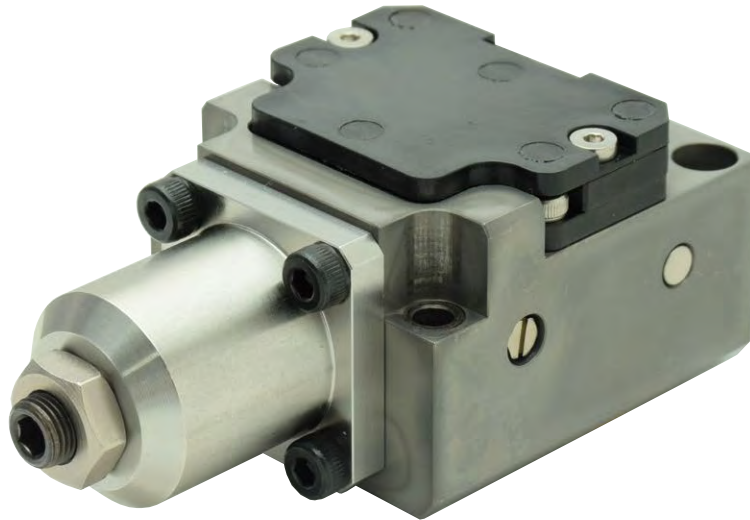


Wireless Pressure Switch



Features

- Wireless detection of hydraulic pressure increase
- No external power supply required / Wireless design
- Waterproof rating equivalent to IPX7 for the sensing unit (the entire device must not be submerged)

Applications

- Clamp confirmation via pressure increase detection of the hydraulic clamp (Used in combination with wireless sensing clamp/unclamp detection)
- Mounting on a fixture enables to detect hydraulic pressure increase closer to the clamp.
- Confirm pressure drop in non-leak circuit

Structure and Configuration

- Internal Structure: Piston + Variable Spring + Transmitter
- YWA receiver (YWB repeater) used in the system configuration

Specifications (Reference)

Max. Operating Pressure	7MPa
Set Pressure Range	INC. 2 ~ 6.5 MPa or DEC. 1 ~ 5 MPa
Hysteresis	max. 1.5 MPa
Weight	0.6 kg
Frequency	920 MHz Band