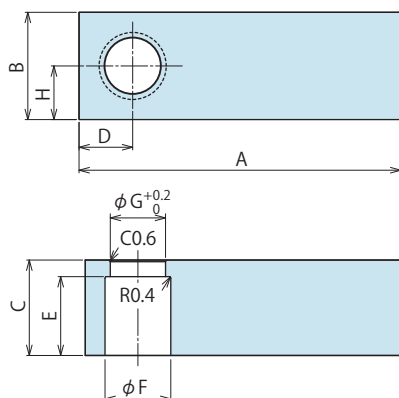


Accessories : Material Swing Lever for Taper Lock Option

Model No. Indication

LZH 048 0 - T
Size
(Refer to the table.)Design No.
(Revision Number)

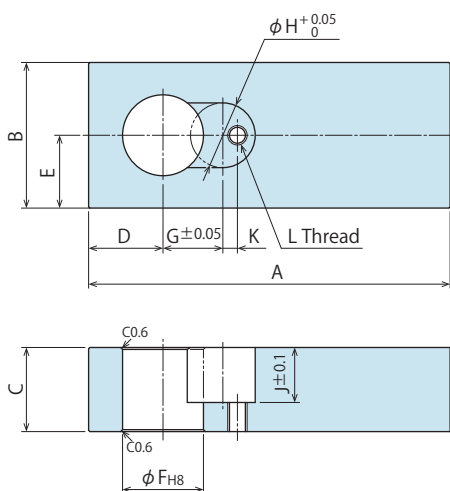
| Model No. | LZH0360 -T | LZH0400 -T | LZH0480 -T | LZH0550 -T | LZH0650 -T | LZH0750 -T | LZH0900 -T | LZH1050 -T |
|---------------------------------------|---------------|---------------|---------------|---------------|---------------|---------------|---------------|---------------|
| Corresponding Model No. ^{※1} | LHA0360 | LHA0400 | LHA0480 | LHA0550 | LHA0650 | LHA0750 | LHA0900 | LHA1050 |
| A | 120 | 145 | 160 | 170 | 175 | 185 | 220 | 270 |
| B | 26 | 32 | 40 | 45 | 50 | 58 | 75 | 90 |
| C | 17 | 19 | 23 | 26 | 29 | 35 | 43 | 50 |
| D | 13 | 16 | 20 | 23 | 25 | 29 | 38 | 45 |
| E | 14 | 16 | 19 | 22 | 25 | 31 | 38 | 44 |
| F | 17 | 20 | 25 | 28 | 34 | 40 | 49 | 60 |
| G | 15 | 17 | 21 | 23.5 | 29 | 33 | 42 | 51 |
| H | 13 | 16 | 20 | 22.5 | 25 | 29 | 37.5 | 45 |

Notes :

- Material : S50CH Surface Finishing : Alkaline Blackening
 - If necessary, the front end should be additionally machined and finished.
 - When determining the phase, refer to taper lock lever design dimensions for each model for the additional machining.
- ※1. Refer to Accessory of Quick Change Lever Option A for -A (Quick Change Lever Option A).
Refer to Accessory of Quick Change Lever Option F for -F (Quick Change Lever Option F).
For -P (Balance Lever Option), it should be designed by customer.

Accessories : Material Swing Lever for Quick Change Lever Option A

Model No. Indication

LZH 048 0 - A
Size
(Refer to the table.)Design No.
(Revision Number)

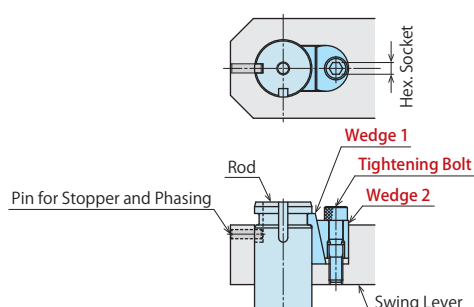
| Model No. | LZH0360 -A | LZH0400 -A | LZH0480 -A | LZH0550 -A | LZH0650 -A | LZH0750 -A | LZH0900 -A | LZH1050 -A |
|-------------------------|----------------------|----------------------|----------------------|----------------------|----------------------|------------------------|----------------------|----------------------|
| Corresponding Model No. | LHA0360 -□□□-A | LHA0400 -□□□-A | LHA0480 -□□□-A | LHA0550 -□□□-A | LHA0650 -□□□-A | LHA0750 -□□□-A | LHA0900 -□□□-A | LHA1050 -□□□-A |
| A | 120 | 145 | 160 | 170 | 175 | 185 | 220 | 270 |
| B | 26 | 32 | 40 | 45 | 50 | 58 | 75 | 90 |
| C | 17 | 19 | 23 | 26 | 29 | 35 | 43 | 50 |
| D | 13 | 16 | 20 | 23 | 25 | 29 | 38 | 45 |
| E | 13 | 16 | 20 | 22.5 | 25 | 29 | 37.5 | 45 |
| F | 15 ^{+0.027} | 18 ^{+0.027} | 22 ^{+0.033} | 25 ^{+0.033} | 30 ^{+0.033} | 35.5 ^{+0.039} | 45 ^{+0.039} | 55 ^{+0.046} |
| G | 12.5 | 15 | 16.5 | 18.5 | 20.5 | 25 | 31 | 33.5 |
| H | 12 | 15 | 18 | 20 | 24 | 28 | 36 | 46 |
| J | 11 | 13 | 15.5 | 17 | 19 | 21 | 28 | 33 |
| K | 2 | 2.5 | 4 | 4.5 | 6.5 | 6.5 | 9 | 14 |
| L | M4×0.7 | M5×0.8 | M5×0.8 | M6×1 | M6×1 | M8×1.25 | M10×1.5 | M10×1.5 |

Notes :

- Material : S50CH Surface Finishing : Alkaline Blackening
- If necessary, the front end should be additionally machined and finished.
- The pin hole for stopper and lever phasing should be additionally machined by referring to Quick Change Lever Option A Design Dimensions.
- Tightening Kit (LZH□-W) for Quick Change Lever Option A is sold separately.

Accessories : Tightening Kit for Quick Change Lever Option A

Model No. Indication

LZH 048 1 - W
Size
(Refer to the table.)Design No.
(Revision Number)

Tightening Kit for mounting Quick Change Lever Option A.

Sold separately from clamp body.

【Contents of Tightening Kit】

• Wedge 1 • Wedge 2 • Tightening Bolt

| Model No. | LZH0361 -W | LZH0401 -W | LZH0481 -W | LZH0551 -W | LZH0651 -W | LZH0751 -W | LZH0901 -W | LZH1051 -W |
|----------------------------------|-------------------|-------------------|-------------------|-------------------|-------------------|-------------------|-------------------|-------------------|
| Corresponding Model No. | LHA0360 -□□□-A | LHA0400 -□□□-A | LHA0480 -□□□-A | LHA0550 -□□□-A | LHA0650 -□□□-A | LHA0750 -□□□-A | LHA0900 -□□□-A | LHA1050 -□□□-A |
| Nominal×Pitch of Tightening Bolt | M4×0.7 | M5×0.8 | M5×0.8 | M6×1 | M6×1 | M8×1.25 | M10×1.5 | M10×1.5 |
| Hex. Socket mm | 2.5 | 3 | 3 | 4 | 4 | 5 | 6 | 6 |
| Tightening Torque N·m | 2.5 | 5.0 | 5.0 | 8.0 | 8.0 | 20 | 40 | 45 |

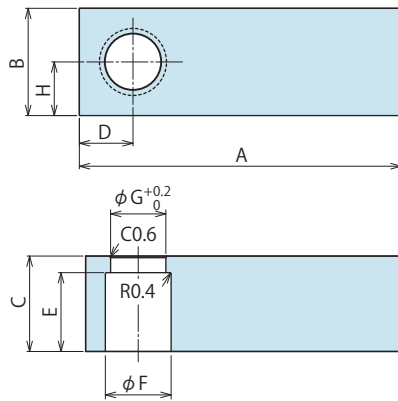
Accessories : Material Swing Lever for Taper Lock Option

Model No. Indication

LZH 048 0 - T

Size
(Refer to the table.)

Design No.
(Revision Number)



| Model No. | LZH0360 -T | LZH0400 -T | LZH0480 -T | LZH0550 -T | LZH0650 -T |
|---------------------------------------|---------------|---------------|---------------|---------------|---------------|
| Corresponding Model No. ^{※5} | LHC0360 | LHC0400 | LHC0480 | LHC0550 | LHC0650 |
| A | 120 | 145 | 160 | 170 | 175 |
| B | 26 | 32 | 40 | 45 | 50 |
| C | 17 | 19 | 23 | 26 | 29 |
| D | 13 | 16 | 20 | 23 | 25 |
| E | 14 | 16 | 19 | 22 | 25 |
| F | 17 | 20 | 25 | 28 | 34 |
| G | 15 | 17 | 21 | 23.5 | 29 |
| H | 13 | 16 | 20 | 22.5 | 25 |

Notes :

1. Material : S50CH Surface Finishing : Alkaline Blackening
2. If necessary, the front end should be additionally machined and finished.
3. When determining the phase, refer to taper lock lever design dimensions for each model for the additional machining.

※5. Refer to Accessory of Quick Change Lever Option A for -A (Quick Change Lever Option A).

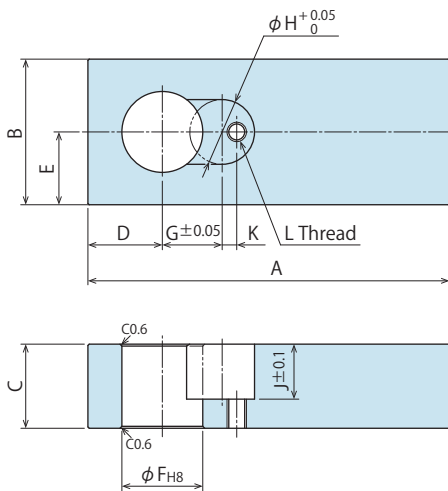
Accessories : Material Swing Lever for Quick Change Lever Option A

Model No. Indication

LZH 048 0 - A

Size
(Refer to the table.)

Design No.
(Revision Number)



| Model No. | LZH0360 -A | LZH0400 -A | LZH0480 -A | LZH0550 -A | LZH0650 -A |
|-------------------------|-----------------------------------|-----------------------------------|-----------------------------------|-----------------------------------|-----------------------------------|
| Corresponding Model No. | LHC0360 -□□-A | LHC0400 -□□-A | LHC0480 -□□-A | LHC0550 -□□-A | LHC0650 -□□-A |
| A | 120 | 145 | 160 | 170 | 175 |
| B | 26 | 32 | 40 | 45 | 50 |
| C | 17 | 19 | 23 | 26 | 29 |
| D | 13 | 16 | 20 | 23 | 25 |
| E | 13 | 16 | 20 | 22.5 | 25 |
| F | 15 ^{+0.027} ₀ | 18 ^{+0.027} ₀ | 22 ^{+0.033} ₀ | 25 ^{+0.033} ₀ | 30 ^{+0.033} ₀ |
| G | 12.5 | 15 | 16.5 | 18.5 | 20.5 |
| H | 12 | 15 | 18 | 20 | 24 |
| J | 11 | 13 | 15.5 | 17 | 19 |
| K | 2 | 2.5 | 4 | 4.5 | 6.5 |
| L | M4×0.7 | M5×0.8 | M5×0.8 | M6×1 | M6×1 |

Notes :

1. Material : S50CH Surface Finishing : Alkaline Blackening
2. If necessary, the front end should be additionally machined and finished.
3. The pin hole for stopper and lever phasing should be additionally machined by referring to Quick Change Lever Option A Design Dimensions.
4. Tightening Kit (LZH□-W) for Quick Change Lever Option A is sold separately.

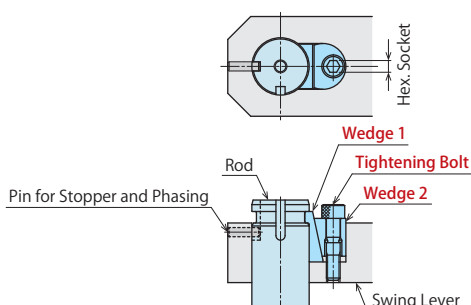
Accessories : Tightening Kit for Quick Change Lever Option A

Model No. Indication

LZH 048 1 - W

Size
(Refer to the table.)

Design No.
(Revision Number)



Tightening Kit for mounting Quick Change Lever Option A.
Sold separately from clamp body.

【Contents of Tightening Kit】

• Wedge 1 • Wedge 2 • Tightening Bolt

| Model No. | LZH0361 -W | LZH0401 -W | LZH0481 -W | LZH0551 -W | LZH0651 -W |
|----------------------------------|------------------|------------------|------------------|------------------|------------------|
| Corresponding Model No. | LHC0360 -□□-A | LHC0400 -□□-A | LHC0480 -□□-A | LHC0550 -□□-A | LHC0650 -□□-A |
| Nominal×Pitch of Tightening Bolt | M4×0.7 | M5×0.8 | M5×0.8 | M6×1 | M6×1 |
| Hex. Socket mm | 2.5 | 3 | 3 | 4 | 4 |
| Tightening Torque N·m | 2.5 | 5.0 | 5.0 | 8.0 | 8.0 |

High-Power
Series

Pneumatic Series

Hydraulic Series

Valve / Coupler
Hydraulic Unit

Manual Operation
Accessories

Cautions / Others

Hole Clamp

SFA

SFC

Swing Clamp

LHA

LHC

LHS

LHW

LG/LT

TLA-2

TLB-2

TLA-1

Link Clamp

LKA

LKC

LKW

LJ/LM

TMA-2

TMA-1

Work Support

LD

LC

TNC

TC

Air Sensing
Lift Cylinder

LLW

Linear Cylinder /
Compact Cylinder

LL

LLR

LLU

DP

DR

DS

DT

Block Cylinder

DBA/DBC

Centering Vise

FVA

FVD

FVC

Control Valve

BZL

BZT

BZX/JZG

BZS

Pallet Clamp

VS/VT

Expansion
Locating Pin

VFL/VFM

VFJ/VFK

Pull Stud Clamp

FP

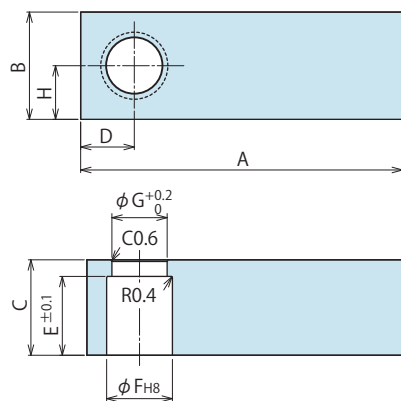
FQ

Customized
Spring Cylinder

DWA/DWB

Accessories : Material Swing Lever for Taper Lock Option

Model No. Indication

LZH 040 0 - T
Size
(Refer to the table.)Design No.
(Revision Number)

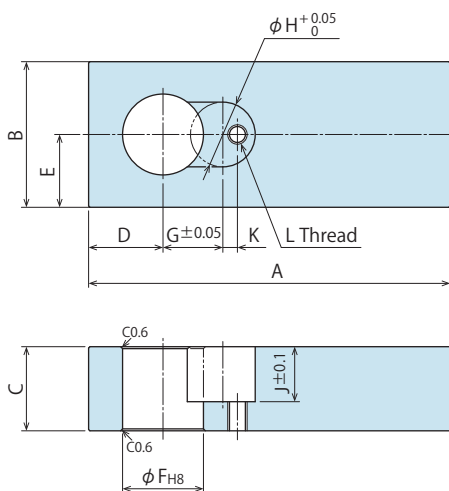
| Model No. | LZH0300-T | LZH0360-T | LZH0400-T | LZH0480-T | LZH0550-T |
|----------------------------|--------------------------------------|--------------------------------------|--------------------------------------|--------------------------------------|--------------------------------------|
| Corresponding Model No. ※6 | LHE0300-□□□ | LHE0360-□□□ | LHE0400-□□□ | LHE0480-□□□ | LHE0550-□□□ |
| A | 90 | 120 | 145 | 160 | 170 |
| B | 21 | 26 | 32 | 40 | 45 |
| C | 14 | 17 | 19 | 23 | 26 |
| D | 10.5 | 13 | 16 | 20 | 23 |
| E | 11 | 14 | 16 | 19 | 22 |
| F | 14 + ^{0.027} / ₀ | 17 + ^{0.027} / ₀ | 20 + ^{0.033} / ₀ | 25 + ^{0.033} / ₀ | 28 + ^{0.033} / ₀ |
| G | 11 | 15 | 17 | 21 | 23.5 |
| H | 10.5 | 13 | 16 | 20 | 22.5 |

Notes :

1. Material : S50CH Surface Finishing : Alkaline Blackening
2. If necessary, the front end should be additionally machined and finished.
3. When determining the phase, refer to taper lock lever design dimensions for each model for the additional machining.
- ※6. Refer to Accessory of Quick Change Lever Option A for -A (Quick Change Lever Option A). Refer to Accessory of Quick Change Lever Option F for -F (Quick Change Lever Option F). For -P (Balance Lever Option), it should be designed by customer.

Accessories : Material Swing Lever for Quick Change Lever Option A

Model No. Indication

LZH 040 0 - A
Size
(Refer to the table.)Design No.
(Revision Number)

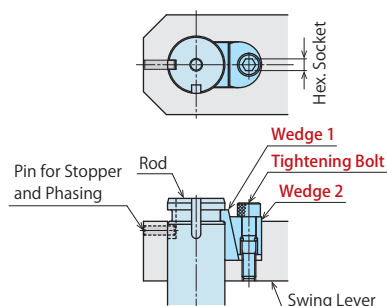
| Model No. | LZH0300-A | LZH0360-A | LZH0400-A | LZH0480-A | LZH0550-A |
|-------------------------|--------------------------------------|--------------------------------------|--------------------------------------|--------------------------------------|--------------------------------------|
| Corresponding Model No. | LHE0300-□□□-A | LHE0360-□□□-A | LHE0400-□□□-A | LHE0480-□□□-A | LHE0550-□□□-A |
| A | 90 | 120 | 145 | 160 | 170 |
| B | 21 | 26 | 32 | 40 | 45 |
| C | 14 | 17 | 19 | 23 | 26 |
| D | 10.5 | 13 | 16 | 20 | 23 |
| E | 10.5 | 13 | 16 | 20 | 22.5 |
| F | 12 + ^{0.027} / ₀ | 15 + ^{0.027} / ₀ | 18 + ^{0.027} / ₀ | 22 + ^{0.033} / ₀ | 25 + ^{0.033} / ₀ |
| G | 10.75 | 12.5 | 15 | 16.5 | 18.5 |
| H | 10.5 | 12 | 15 | 18 | 20 |
| J | 9.5 | 11 | 13 | 15.5 | 17 |
| K | 1.25 | 2 | 2.5 | 4 | 4.5 |
| L | M4×0.7 | M4×0.7 | M5×0.8 | M5×0.8 | M6×1 |

Notes :

1. Material : S50CH Surface Finishing : Alkaline Blackening
2. If necessary, the front end should be additionally machined and finished.
3. The pin hole for stopper and lever phasing should be additionally machined by referring to Quick Change Lever Option A Design Dimensions.
4. Tightening Kit (LZH□-W) for Quick Change Lever Option A is sold separately.

Accessories : Tightening Kit for Quick Change Lever Option A

Model No. Indication

LZH 040 1 - W
Size
(Refer to the table.)Design No.
(Revision Number)

Tightening Kit for mounting Quick Change Lever Option A.

Sold separately from clamp body.

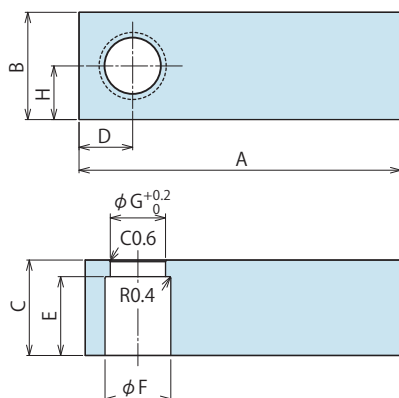
【Contents of Tightening Kit】

• Wedge 1 • Wedge 2 • Tightening Bolt

| Model No. | LZH0301-W | LZH0361-W | LZH0401-W | LZH0481-W | LZH0551-W |
|----------------------------------|---------------|---------------|---------------|---------------|---------------|
| Corresponding Model No. | LHE0300-□□□-A | LHE0360-□□□-A | LHE0400-□□□-A | LHE0480-□□□-A | LHE0550-□□□-A |
| Nominal×Pitch of Tightening Bolt | M4×0.7 | M4×0.7 | M5×0.8 | M5×0.8 | M6×1 |
| Hex. Socket mm | 2.5 | 2.5 | 3 | 3 | 4 |
| Tightening Torque N·m | 2.5 | 2.5 | 5.0 | 5.0 | 8.0 |

Accessories : Material Swing Lever for Taper Lock Option

Model No. Indication

LZH 048 0 - T
Size
(Refer to the table.)Design No.
(Revision Number)

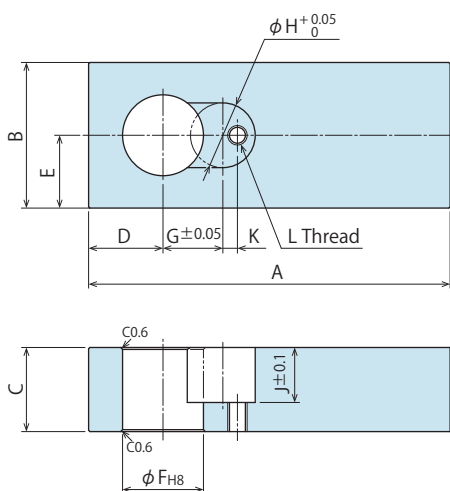
| Model No. | LZH0360 -T | LZH0400 -T | LZH0480 -T | LZH0550 -T | LZH0650 -T | LZH0750 -T | LZH0900 -T | LZH1050 -T |
|---------------------------------------|---------------|---------------|---------------|---------------|---------------|---------------|---------------|---------------|
| Corresponding Model No. ^{*)} | LHS0360 | LHS0400 | LHS0480 | LHS0550 | LHS0650 | LHS0750 | LHS0900 | LHS1050 |
| A | 120 | 145 | 160 | 170 | 175 | 185 | 220 | 270 |
| B | 26 | 32 | 40 | 45 | 50 | 58 | 75 | 90 |
| C | 17 | 19 | 23 | 26 | 29 | 35 | 43 | 50 |
| D | 13 | 16 | 20 | 23 | 25 | 29 | 38 | 45 |
| E | 14 | 16 | 19 | 22 | 25 | 31 | 38 | 44 |
| F | 17 | 20 | 25 | 28 | 34 | 40 | 49 | 60 |
| G | 15 | 17 | 21 | 23.5 | 29 | 33 | 42 | 51 |
| H | 13 | 16 | 20 | 22.5 | 25 | 29 | 37.5 | 45 |

Notes :

- Material : S50CH Surface Finishing : Alkaline Blackening
 - If necessary, the front end should be additionally machined and finished.
 - When determining the phase, refer to taper lock lever design dimensions for each model for the additional machining.
- ※1. Refer to Accessory of Quick Change Lever Option A for -A (Quick Change Lever Option A).
Refer to Accessory of Quick Change Lever Option F for -F (Quick Change Lever Option F).
For -P (Balance Lever Option), it should be designed by customer.

Accessories : Material Swing Lever for Quick Change Lever Option A

Model No. Indication

LZH 048 0 - A
Size
(Refer to the table.)Design No.
(Revision Number)

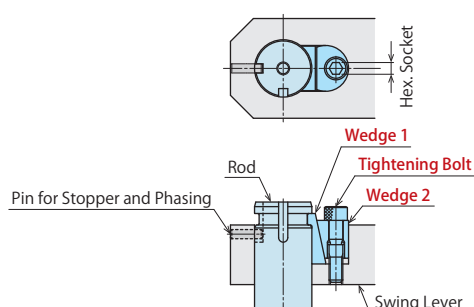
| Model No. | LZH0360 -A | LZH0400 -A | LZH0480 -A | LZH0550 -A | LZH0650 -A | LZH0750 -A | LZH0900 -A | LZH1050 -A |
|-------------------------|-----------------------------------|-----------------------------------|-----------------------------------|-----------------------------------|-----------------------------------|-------------------------------------|-----------------------------------|-----------------------------------|
| Corresponding Model No. | LHS0360 -□□-A | LHS0400 -□□-A | LHS0480 -□□-A | LHS0550 -□□-A | LHS0650 -□□-A | LHS0750 -□□-A | LHS0900 -□□-A | LHS1050 -□□-A |
| A | 120 | 145 | 160 | 170 | 175 | 185 | 220 | 270 |
| B | 26 | 32 | 40 | 45 | 50 | 58 | 75 | 90 |
| C | 17 | 19 | 23 | 26 | 29 | 35 | 43 | 50 |
| D | 13 | 16 | 20 | 23 | 25 | 29 | 38 | 45 |
| E | 13 | 16 | 20 | 22.5 | 25 | 29 | 37.5 | 45 |
| F | 15 ^{+0.027} ₀ | 18 ^{+0.027} ₀ | 22 ^{+0.033} ₀ | 25 ^{+0.033} ₀ | 30 ^{+0.033} ₀ | 35.5 ^{+0.039} ₀ | 45 ^{+0.039} ₀ | 55 ^{+0.046} ₀ |
| G | 12.5 | 15 | 16.5 | 18.5 | 20.5 | 25 | 31 | 33.5 |
| H | 12 | 15 | 18 | 20 | 24 | 28 | 36 | 46 |
| J | 11 | 13 | 15.5 | 17 | 19 | 21 | 28 | 33 |
| K | 2 | 2.5 | 4 | 4.5 | 6.5 | 6.5 | 9 | 14 |
| L | M4×0.7 | M5×0.8 | M5×0.8 | M6×1 | M6×1 | M8×1.25 | M10×1.5 | M10×1.5 |

Notes :

- Material : S50CH Surface Finishing : Alkaline Blackening
- If necessary, the front end should be additionally machined and finished.
- The pin hole for stopper and lever phasing should be additionally machined by referring to Quick Change Lever Option A Design Dimensions.
- Tightening Kit (LZH□-W) for Quick Change Lever Option A is sold separately.

Accessories : Tightening Kit for Quick Change Lever Option A

Model No. Indication

LZH 048 1 - W
Size
(Refer to the table.)Design No.
(Revision Number)

Tightening Kit for mounting Quick Change Lever Option A.

Sold separately from clamp body.

【Contents of Tightening Kit】

• Wedge 1 • Wedge 2 • Tightening Bolt

| Model No. | LZH0361 -W | LZH0401 -W | LZH0481 -W | LZH0551 -W | LZH0651 -W | LZH0751 -W | LZH0901 -W | LZH1051 -W |
|----------------------------------|------------------|------------------|------------------|------------------|------------------|------------------|------------------|------------------|
| Corresponding Model No. | LHS0360 -□□-A | LHS0400 -□□-A | LHS0480 -□□-A | LHS0550 -□□-A | LHS0650 -□□-A | LHS0750 -□□-A | LHS0900 -□□-A | LHS1050 -□□-A |
| Nominal×Pitch of Tightening Bolt | M4×0.7 | M5×0.8 | M5×0.8 | M6×1 | M6×1 | M8×1.25 | M10×1.5 | M10×1.5 |
| Hex. Socket mm | 2.5 | 3 | 3 | 4 | 4 | 5 | 6 | 6 |
| Tightening Torque N·m | 2.5 | 5.0 | 5.0 | 8.0 | 8.0 | 20 | 40 | 45 |

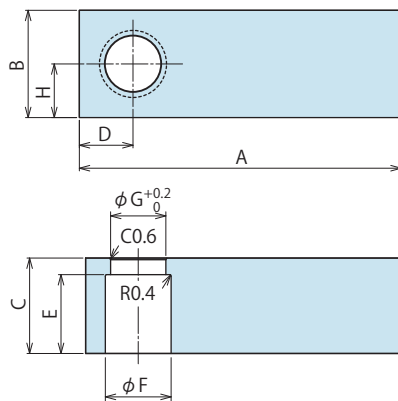
Accessories : Material Swing Lever for Taper Lock Option

Model No. Indication

LZH 048 0 - T

Size
(Refer to the table.)

Design No.
(Revision Number)



| Model No. | LZH0400 -T | LZH0480 -T | LZH0550 -T | LZH0650 -T | LZH0750 -T |
|---------------------------------------|---------------|---------------|---------------|---------------|---------------|
| Corresponding Model No. ^{※5} | LHW0401 | LHW0481 | LHW0551 | LHW0651 | LHW0751 |
| A | 145 | 160 | 170 | 175 | 185 |
| B | 32 | 40 | 45 | 50 | 58 |
| C | 19 | 23 | 26 | 29 | 35 |
| D | 16 | 20 | 23 | 25 | 29 |
| E | 16 | 19 | 22 | 25 | 31 |
| F | 20 | 25 | 28 | 34 | 40 |
| G | 17 | 21 | 23.5 | 29 | 33 |
| H | 16 | 20 | 22.5 | 25 | 29 |

Notes :

1. Material : S50CH Surface Finishing : Alkaline Blackening
2. If necessary, the front end should be additionally machined and finished.
3. When determining the phase, refer to taper lock lever design dimensions for each model for the additional machining.

※5. Refer to Accessory of Quick Change Lever Option A for -A (Quick Change Lever Option A).

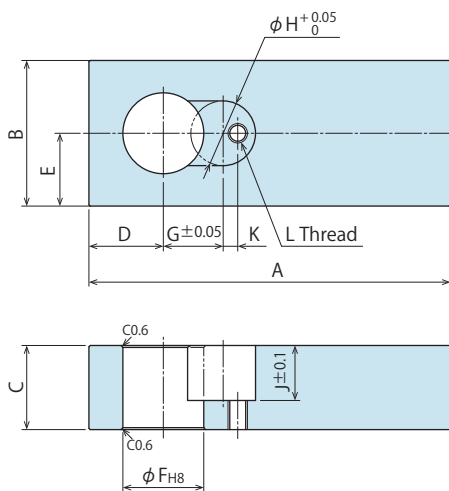
Accessories : Material Swing Lever for Quick Change Lever Option A

Model No. Indication

LZH 048 0 - A

Size
(Refer to the table.)

Design No.
(Revision Number)



| Model No. | LZH0400 -A | LZH0480 -A | LZH0550 -A | LZH0650 -A | LZH0750 -A |
|-------------------------|----------------------|----------------------|----------------------|----------------------|------------------------|
| Corresponding Model No. | LHW0401 -□□□-A | LHW0481 -□□□-A | LHW0551 -□□□-A | LHW0651 -□□□-A | LHW0751 -□□□-A |
| A | 145 | 160 | 170 | 175 | 185 |
| B | 32 | 40 | 45 | 50 | 58 |
| C | 19 | 23 | 26 | 29 | 35 |
| D | 16 | 20 | 23 | 25 | 29 |
| E | 16 | 20 | 22.5 | 25 | 29 |
| F | 18 ^{+0.027} | 22 ^{+0.033} | 25 ^{+0.033} | 30 ^{+0.033} | 35.5 ^{+0.039} |
| G | 15 | 16.5 | 18.5 | 20.5 | 25 |
| H | 15 | 18 | 20 | 24 | 28 |
| J | 13 | 15.5 | 17 | 19 | 21 |
| K | 2.5 | 4 | 4.5 | 6.5 | 6.5 |
| L | M5×0.8 | M5×0.8 | M6×1 | M6×1 | M8×1.25 |

Notes :

1. Material : S50CH Surface Finishing : Alkaline Blackening
2. If necessary, the front end should be additionally machined and finished.
3. The pin hole for stopper and lever phasing should be additionally machined by referring to Quick Change Lever Option A Design Dimensions.
4. Tightening Kit (LZH□-W) for Quick Change Lever Option A is sold separately.

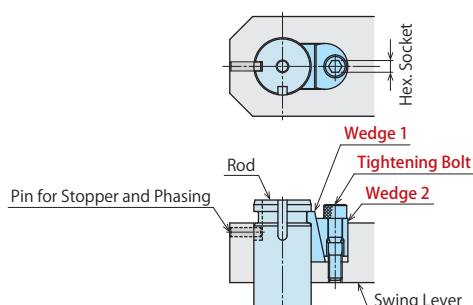
Accessories : Tightening Kit for Quick Change Lever Option A

Model No. Indication

LZH 048 1 - W

Size
(Refer to the table.)

Design No.
(Revision Number)



Tightening Kit for mounting Quick Change Lever Option A.
Sold separately from clamp body.

【Contents of Tightening Kit】

• Wedge 1 • Wedge 2 • Tightening Bolt

| Model No. | LZH0401 -W | LZH0481 -W | LZH0551 -W | LZH0651 -W | LZH0751 -W |
|----------------------------------|-------------------|-------------------|-------------------|-------------------|-------------------|
| Corresponding Model No. | LHW0401 -□□□-A | LHW0481 -□□□-A | LHW0551 -□□□-A | LHW0651 -□□□-A | LHW0751 -□□□-A |
| Nominal×Pitch of Tightening Bolt | M5×0.8 | M5×0.8 | M6×1 | M6×1 | M8×1.25 |
| Hex. Socket mm | 3 | 3 | 4 | 4 | 5 |
| Tightening Torque N·m | 5.0 | 5.0 | 8.0 | 8.0 | 20 |

High-Power
Series

Pneumatic Series

Hydraulic Series

Valve / Coupler
Hydraulic Unit

Manual Operation
Accessories

Cautions / Others

Hole Clamp

SFA

SFC

Swing Clamp

LHA

LHC

LHS

LHW

LG/LT

TLA-2

TLB-2

TLA-1

Link Clamp

LKA

LKC

LKW

LJ/LM

TMA-2

TMA-1

Work Support

LD

LC

TNC

TC

Air Sensing

Lift Cylinder

LLW

Linear Cylinder /

Compact Cylinder

LL

LLR

LLU

DP

DR

DS

DT

Block Cylinder

DBA/DBC

Centering Vise

FVA

FVD

FVC

Control Valve

BZL

BZT

BZX/JZG

BZS

Pallet Clamp

VS/VT

Expansion

Locating Pin

VFL/VFM

VFJ/VFK

Pull Stud Clamp

FP

FQ

Customized

Spring Cylinder

DWA/DWB