

Hydraulic Unit

5 ℓ / 10 ℓ Tank

Model CPB /CPD/CPC/CPE

Model CQC/CQE



Converts Factory-Compressed Air into Hydraulic Pressure

Compact Hydraulic Unit Composed of Pump, Non-Leak Valve, Pressure Relief Valve, Pressure Switch and Oil Tank

● Features

● Energy Saving

The pump drives (consumes the air pressure) only during pressurization. After the pressurization, air pressure and hydraulic pressure reach equilibrium and the pump stops. Air consumption is zero after the pressurization is completed.

● Maintains Hydraulic Pressure with Non-Leak Valve

Non-leak valve (BA valve) maintains hydraulic pressure even when air supply is stopped. This prevents a die fall.

● Maintains Set Pressure with Pressure Relief Valve ※ Only when selecting the pressure relief valve.

Set pressure : 25MPa is maintained by Pressure Relief Valve (BR valve) even when hydraulic pressure increases during press machine operation.

● Pressure Supply when Hydraulic Pressure Decreases

The pump drives and supplies pressure when the hydraulic pressure in the circuit decreases because of temperature reduction etc. This ensures a constant clamping force.

● A Wide Range of Variations

Select a tank from 5 ℓ and 10 ℓ and a pump from four variations for the most suitable hydraulic unit according to the clamp system.

Model No. Indication

C P B M 0 0 0 - 2GH - 5 - -

1 2 3 4 5 6 7 8 9

Note :

- ※1. For special-order products, “-Z□□□□□” will be added to the end of the model number. Please contact us for details.

1 Unit

P : For Small/Medium Clamp (5 ℓ Tank)
Q : For Large Clamp (10 ℓ Tank)

Notes :

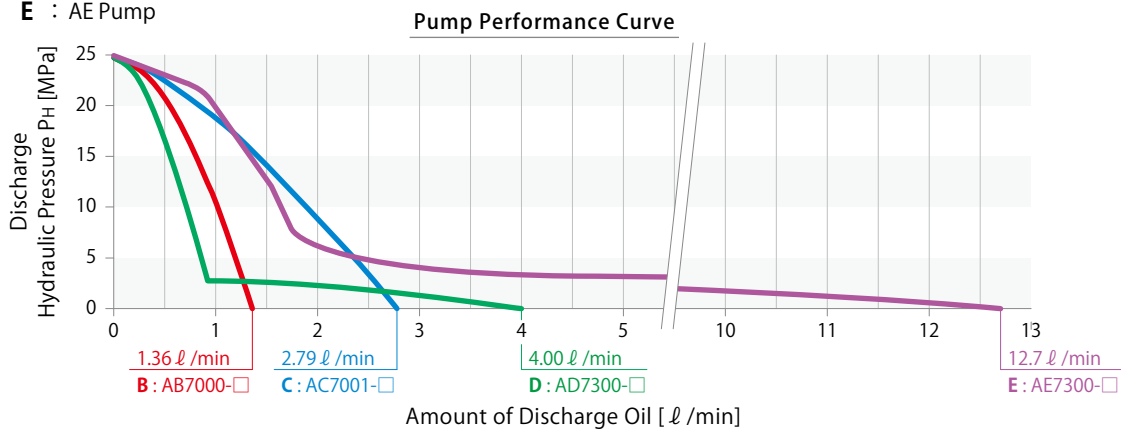
- Only **2** Pump Model **C** : AC pump and **E** : AE pump can be installed on **Q** : For Large Clamp Unit (10 ℓ Tank).
- Please refer to Model CP/CR (P.101) for 2 ℓ Tank.

2 Pump Model

B : AB Pump
D : AD Pump
C : AC Pump
E : AE Pump

Note :

- B** : AB Pump and **D** : AD Pump can be selected only when selecting **1** Unit **P** : For Small/Medium Clamp (5 ℓ Tank).



3 Pressure Code

M : Working Pressure 25MPa, Pressure Switch Set Pressure INC. 17.6MPa, DEC. 2.94MPa
N : Working Pressure 25MPa, Pressure Switch Set Pressure INC. 17.6MPa, DEC. 2.94MPa, with Pressure Relief Valve^{※2}

4 Fluid Code

0 : General Hydraulic Oil
G : Water·Glycol (Iron Tank)
S : Silicon Oil
F : Fatty Acid Ester

5 Design No.

0 : Revision Number

6 Circuit Symbol (Indicate along with the number of circuits.)

U : For Clamp Double Solenoid Valve
V : For Die Lifter Double Solenoid Valve
G : For Clamp Single Solenoid Valve
H : For Die Lifter Single Solenoid Valve
PP : For Double-Acting Clamp Double Solenoid Valve (2 stations)
R : With Pressure Relief Valve^{※2}

Notes :^{※2}. Select the hydraulic unit with pressure relief valve when using hydraulic clamps under high temperature or large temperature change since there may be pressure fluctuation caused by temperature change.

- For **R** : Pressure Relief Valve, **3** Pressure Code is “**N**”.

7 Voltage Code

1 : AC100V (50/60Hz) **4** : AC220V (50/60Hz)
2 : AC200V (50/60Hz) **5** : DC24V
3 : AC110V (50/60Hz)

8 Common (Only when selecting **7** Voltage Code **5**:DC24V)

Blank : For **6** Circuit Symbol with Single Solenoid Valve only

For **6** Circuit Symbol which includes Double Solenoid Valve

A : + Common (Standard)
B : - Common

9 Option

Blank : Standard

D0 : Digital Pressure Sensor (PNP)(DC24V only)
D1 : Digital Pressure Sensor (NPN)(DC24V only)
E : Without Filter Regulator
F : Manual-Drain Filter Regulator
G : With Primary Pressure Gauge
H : With Piping Block on the Left
J : With Air Regulator
K0 : With Pressure Gauge for Each Circuit (Without Primary Pressure Gauge)
K1 : With Color Displayed Pressure Gauge for Each Circuit (Without Primary Pressure Gauge)
KG0 : With Pressure Gauge for Each Circuit (With Primary Pressure Gauge)
KG1 : With Color Displayed Pressure Gauge for Each Circuit (With Primary Pressure Gauge)
L : With Pressure Switch Light
N : Piping Port NPT Thread, Pressure Gauge in both PSI/MPa^{※3}
P : Pressure Gauge in both PSI/MPa
Q0 : With Oil Level Switch (ON when Oil Level Drops)
Q1 : With Oil Level Switch (OFF when Oil Level Drops)
T : Iron Tank (CP□ : only 5 ℓ tank can be selected.)^{※4}

Notes :

- ※3. Dimensions for **9** Option **N** : Piping Port NPT Thread in the specification sheet and other documents are written in inches.
 ※4. Iron Tank is the standard option for CQ□ : 10 ℓ Tank.
 1. Please contact us for specifications and external dimensions for these options.
 2. The external dimensions for 5 circuits and 6 circuits are different. Please contact us for further information.

Clamp · Unit
 Operation Panel
 Control Unit

Die Lifter
 Pre-Roller

Accessories

Cautions
 Company Profile

Clamp

GA
 GD
 GBB
 GBC
 GBE
 GBF
 GBP
 GBQ
 GN
 GHA

Hydraulic Unit

CP
 CR
 CPB
 CPD
 CPC
 CPE
 CQC
 CQE

Pump Unit

CB
 CD
 CC

Valve Unit

BC
 BH
 MV

Operation Panel
 Control Unit

YP
 YAA

Specifications

Model No.		CPBM	CPBN	CPDM	CPDN	CPCM	CPCN	CPEM	CPEN	CQCM	CQCN	CQEM	CQEN		
Working Hydraulic Pressure	MPa	25													
Withstanding Pressure	MPa	37													
Tank Capacity	ℓ	5 ℓ (Actual Amount for Use 3.7 ℓ : H.L.5 ℓ -L.L.1.3 ℓ) ※1									10 ℓ (Actual Amount for Use 7 ℓ : H.L.10 ℓ -L.L.3 ℓ)				
Operating Temperature	°C	0 ~ 70													
Use Frequency		20 Cycles / Day or less Pressure Rising Time : 2.5 min. / Cycle or less													
Main Components	Pump	Model No.	AB7000-□		AD7300-□		AC7001-□		AE7300-□		AC7001-□		AE7300-□		
		Set Discharge Pressure	MPa	25	22.5	25	22.5	25	22.5	25	22.5	25	22.5	25	22.5
		Discharge Oil under No Load	ℓ /min	1.36	1.32	4.00	3.74	2.79	2.70	12.7	12.5	2.79	2.70	12.7	12.5
		Set Air Pressure	MPa	0.45	0.41	0.45	0.41	0.47	0.43	0.47	0.43	0.47	0.43	0.47	0.43
		Air Consumption	m ³ (normal)/min	max. 0.4		max. 0.4		max. 1.0		max. 1.0		max. 1.0		max. 1.0	
	Suction Filter	Model No.	JF1030		JF1030		JF1030		JF1040		JF1030		JF1040		
		Filtration Degree	174 μm (100 Mesh)												
	Non-Leak Valve	Model No.	BA5011-0	BA5011-0 BA5R11-0	BA5011-0	BA5011-0 BA5R11-0	BA5011-0	BA5011-0 BA5R11-0	BA5011-0 -Z00101	BA5011-0 BA5R11-0 -Z00102	BA5001-0	BA5001-0 BA5R01-0	BA5001-0 -Z00107	BA5001-0 BA5R01-0 -Z00108	
	Pressure Switch (For Clamp)	Model No.	JBA2700-0G												
		Operation Mode/Set Pressure	MPa Pressure Increase Detection / INC. 17.6												
	Pressure Switch (For Die Lifter)	Model No.	JBA0700-0G												
		Operation Mode/Set Pressure	MPa Pressure Decrease Detection / DEC. 2.94												
	Pressure Relief Valve	Model No.	-	BR5N11-0	-	BR5N11-0	-	BR5N11-0	-	BR5N11-0	-	BR5N11-0	-	BR5N11-0	
		Set Pressure	MPa	-	25 ⁺² / ₀	-	25 ⁺² / ₀	-	25 ⁺² / ₀	-	25 ⁺² / ₀	-	25 ⁺² / ₀	-	25 ⁺² / ₀

Notes :

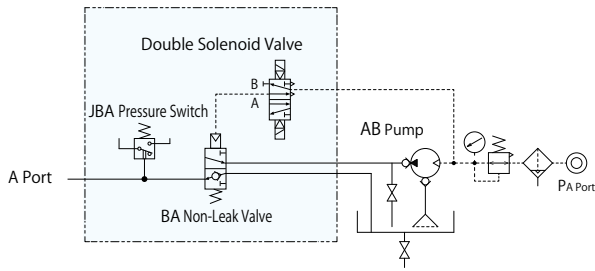
※ 1. Iron Tank Capacity is 5 ℓ (Actual Amount for Use 2.9 ℓ : H.L. 5.1 ℓ -L.L. 2.2 ℓ).

1. If hydraulic viscosity is higher than specified, action time will be longer. Please use hydraulic oil equivalent to ISO-VG-32.
2. If using it at low temperature, action time will be longer because the viscosity of hydraulic oil becomes higher.
3. When setting a pressure gauge to a hydraulic circuit, install a damper or use an oil-filled (glycerin) pressure gauge in order to prevent damage caused by pressure surging.
4. Provide enough space at the top of the unit taking into consideration the maintenance of the pump.

● Circuit Symbol

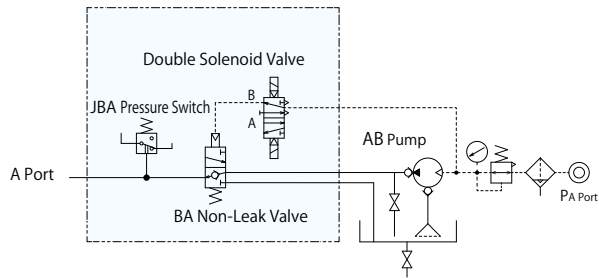
U : Double Solenoid Valve for Clamp

Clamp maintains the condition under non-power distribution.



V : Double Solenoid Valve for Die Lifter

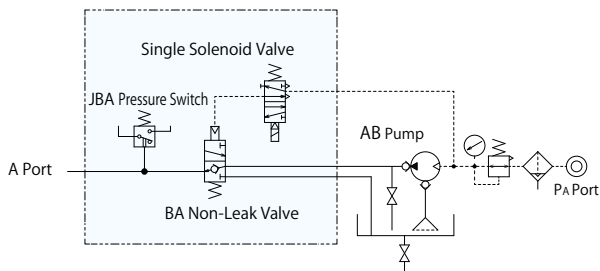
Die lifter maintains the condition under non-power distribution.



G : Single Solenoid Valve for Clamp (Normal Open)

Clamp locks under non-power distribution.

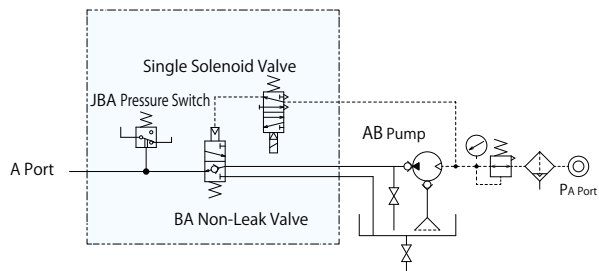
Select this option when using it with U circuit.



H : Single Solenoid Valve for Die Lifter (Normal Close)

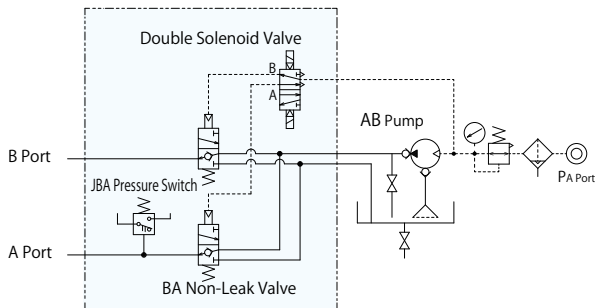
Die lifter retracts under non-power distribution.

Select this option when using it with U circuit.



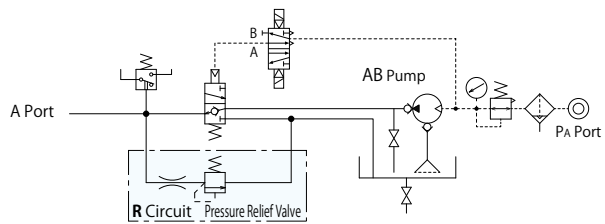
PP : Double Solenoid Valve for Double-Acting Clamp

Clamp maintains the condition under non-power distribution.



R : Pressure Relief Valve

Pressure relief valve maintains the set pressure : $25 \pm 2_0$ MPa even when oil temperature rises. The drawing below shows the state that R circuit (with pressure relief valve) is combined with C circuit.



Notes:

1. PA Port: Air Source, PH Port: Hydraulic Source, R Port: Drain Port, A/B Port: To Automatic Clamp or RA Die Lifter.
2. Filters are built in A/B port.
3. Please contact us for circuits other than shown in the drawings.

Clamp • Unit
Operation Panel
Control Unit

Die Lifter
Pre-Roller

Accessories

Cautions
Company Profile

Clamp

GA

GD

GBB

GBC

GBE

GBF

GBP

GBQ

GN

GHA

Hydraulic Unit

CP

CR

CPB

CPD

CPC

CPE

CQC

CQE

Pump Unit

CB

CD

CC

Valve Unit

BC

BH

MV

Operation Panel Control Unit

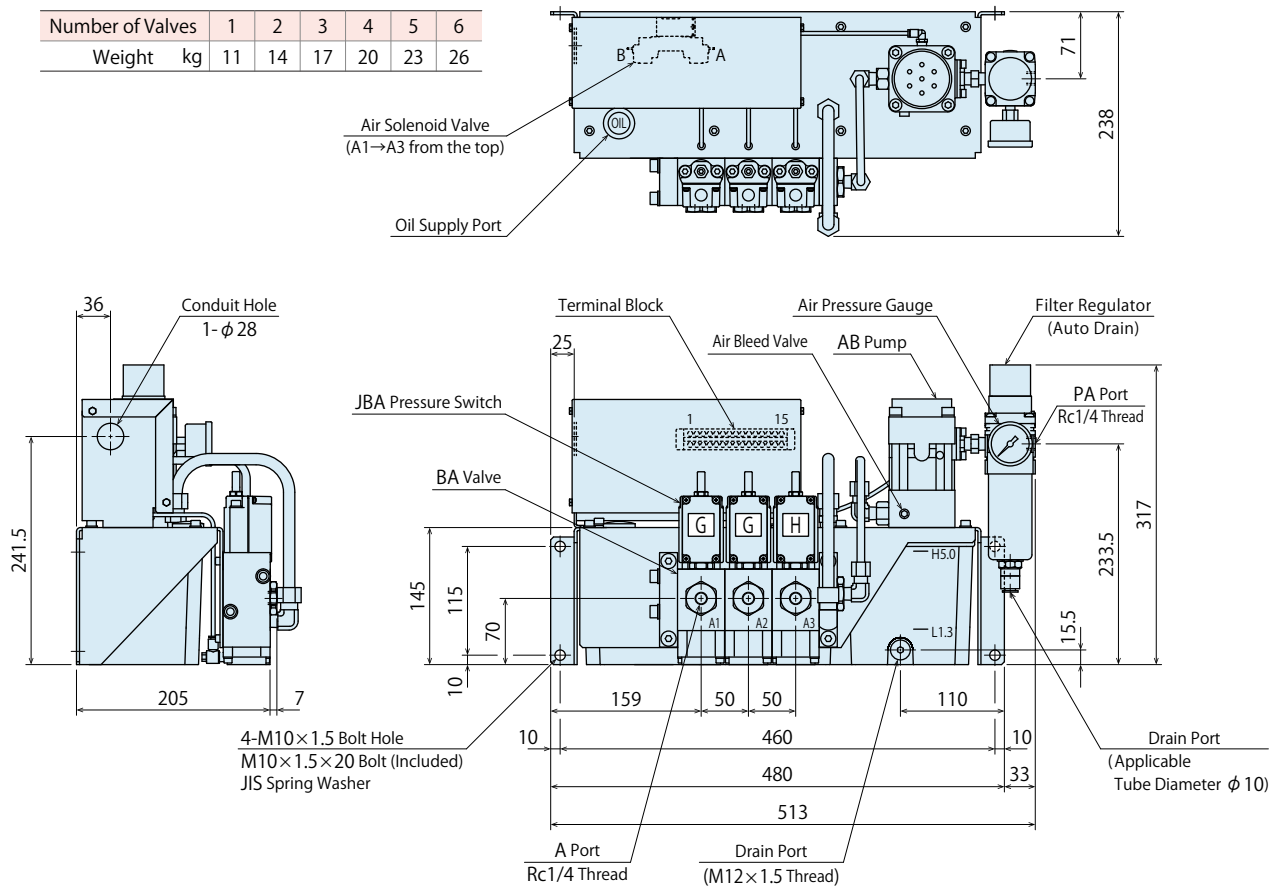
YP

YAA

External Dimensions : CPB

※ This drawing shows CPBM000-2GH standard model.
Please contact us for external dimensions for options.

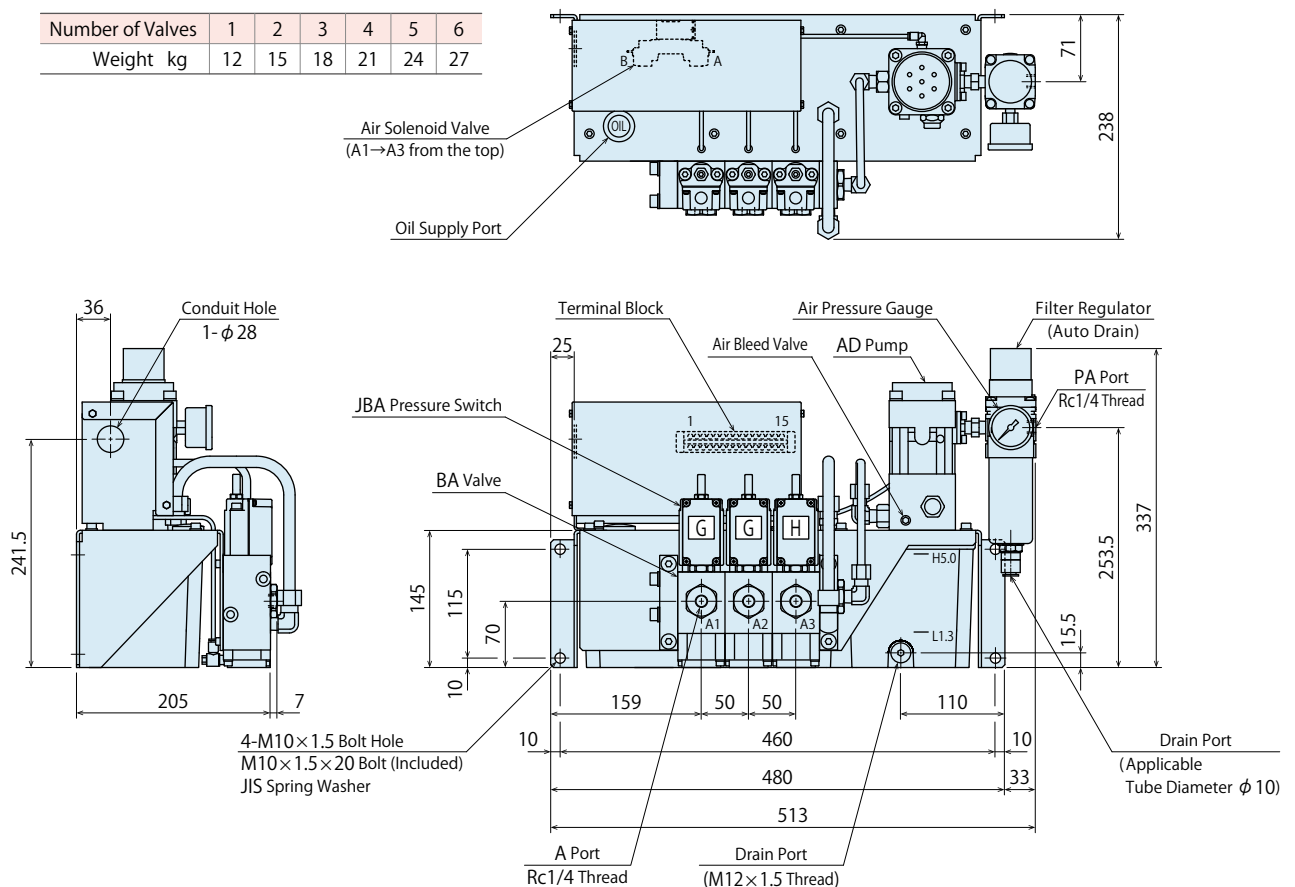
Number of Valves	1	2	3	4	5	6
Weight kg	11	14	17	20	23	26



External Dimensions : CPD

※ This drawing shows CPDM000-2GH standard model.
Please contact us for external dimensions for options.

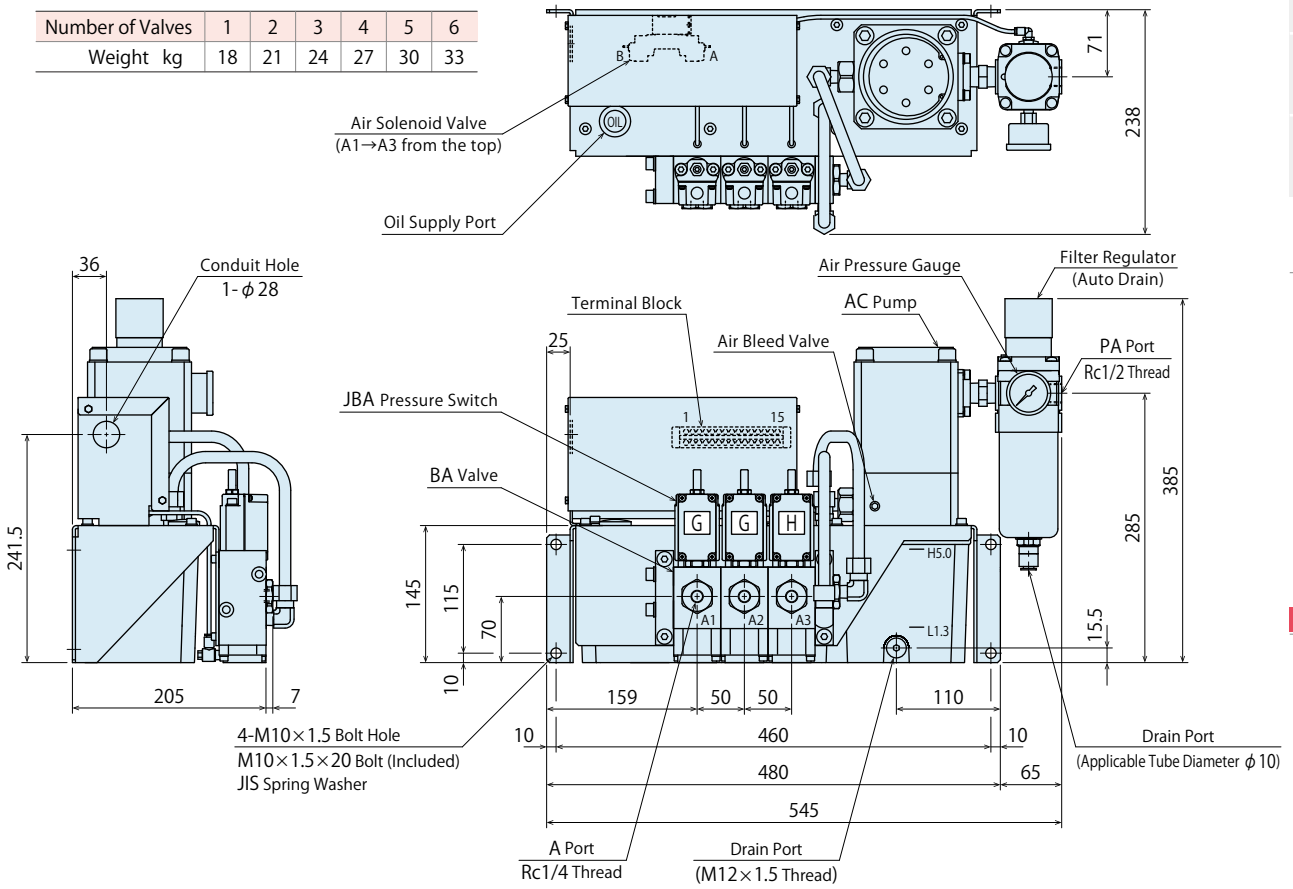
Number of Valves	1	2	3	4	5	6
Weight kg	12	15	18	21	24	27



External Dimensions : CPC

※ This drawing shows CPCM000-2GH standard model.
Please contact us for external dimensions for options.

Number of Valves	1	2	3	4	5	6
Weight kg	18	21	24	27	30	33



Clamp · Unit
Operation Panel
Control Unit

Die Lifter
Pre-Roller

Accessories

Cautions
Company Profile

Clamp

- GA
- GD
- GBB
- GBC
- GBE
- GBF
- GBP
- GBQ
- GN
- GHA

Hydraulic Unit

- CP
- CR
- CPB
- CPD
- CPC
- CPE
- CQC
- CQE

Pump Unit

- CB
- CD
- CC

Valve Unit

- BC
- BH
- MV

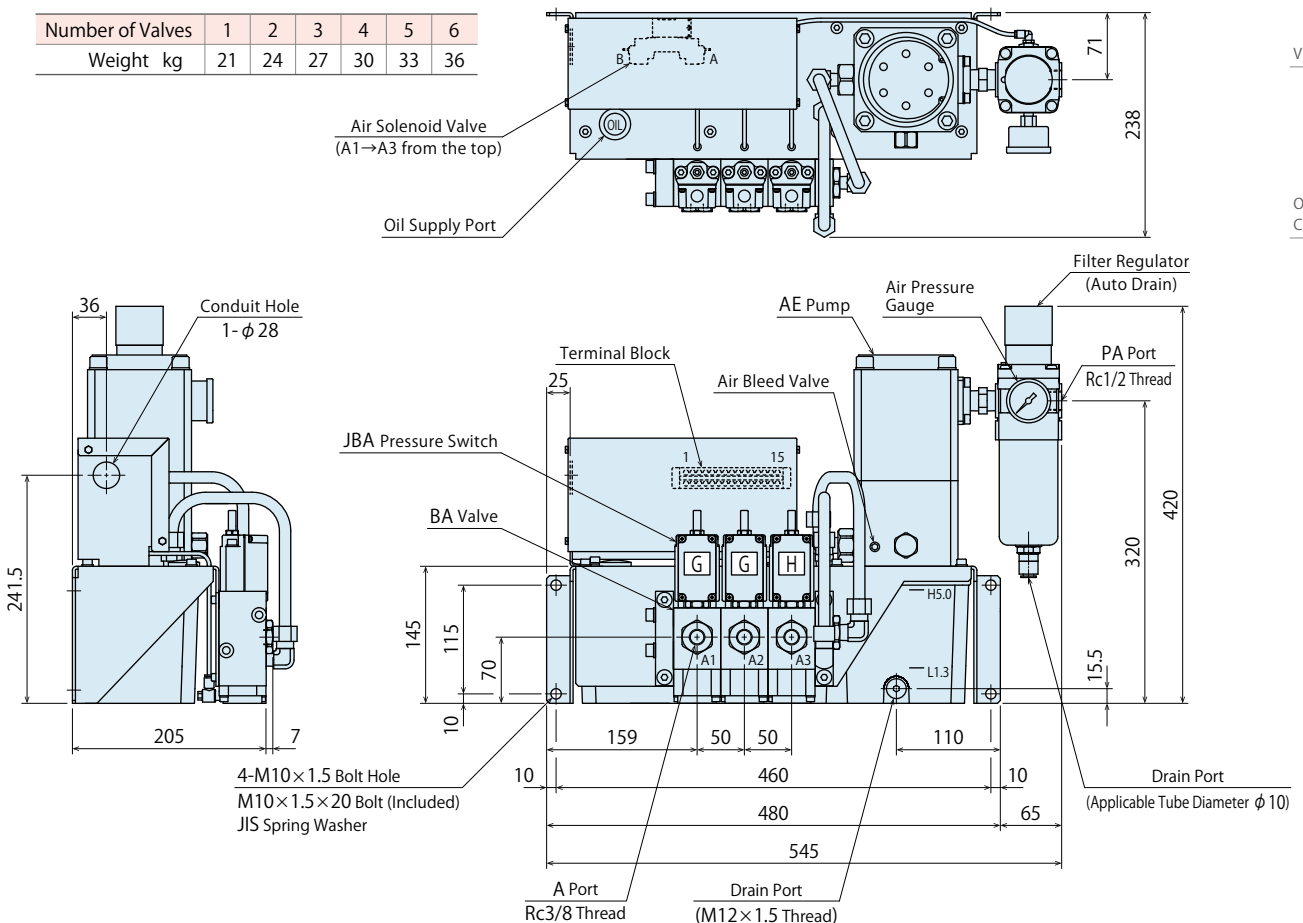
Operation Panel
Control Unit

- YP
- YAA

External Dimensions : CPE

※ This drawing shows CPEM000-2GH standard model.
Please contact us for external dimensions for options.

Number of Valves	1	2	3	4	5	6
Weight kg	21	24	27	30	33	36



**Clamp • Unit
Operation Panel
Control Unit**

**Die Lifter
Pre-Roller**

Accessories

**Cautions
Company Profile**

Clamp

GA

GD

GBB

GBC

GBE

GBF

GBP

GBQ

GN

GHA

Hydraulic Unit

CP

CR

CPB

CPD

CPC

CPE

CQC

CQE

Pump Unit

CB

CD

CC

Valve Unit

BC

BH

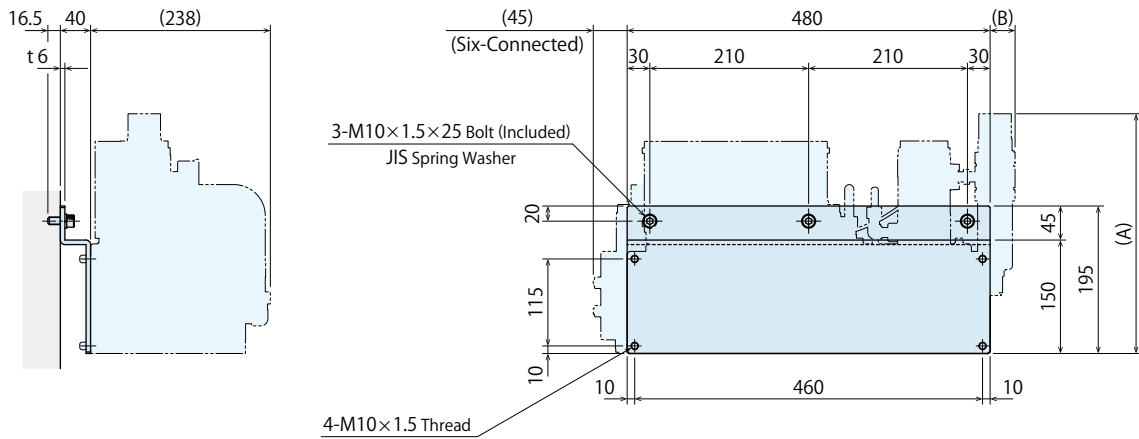
MV

Operation Panel Control Unit

YP

YAA

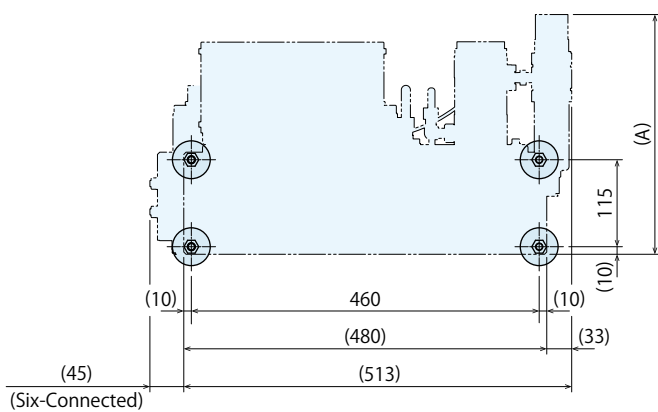
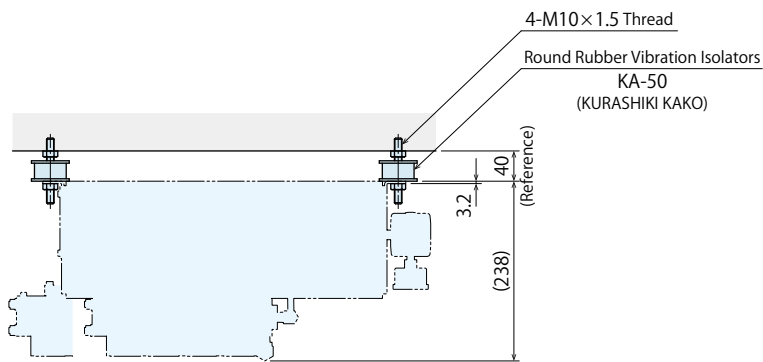
External Dimensions : CPSH000 (Wall Mounted)



(mm)

Hydraulic Unit Model No.	Dimension A	Dimension B
CPB	317	33
CPD	337	33
CPC	385	65
CPE	420	65

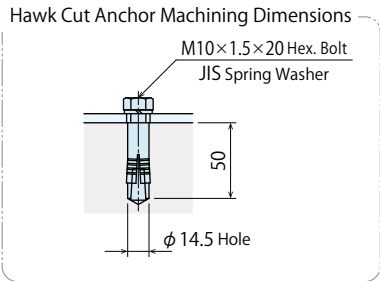
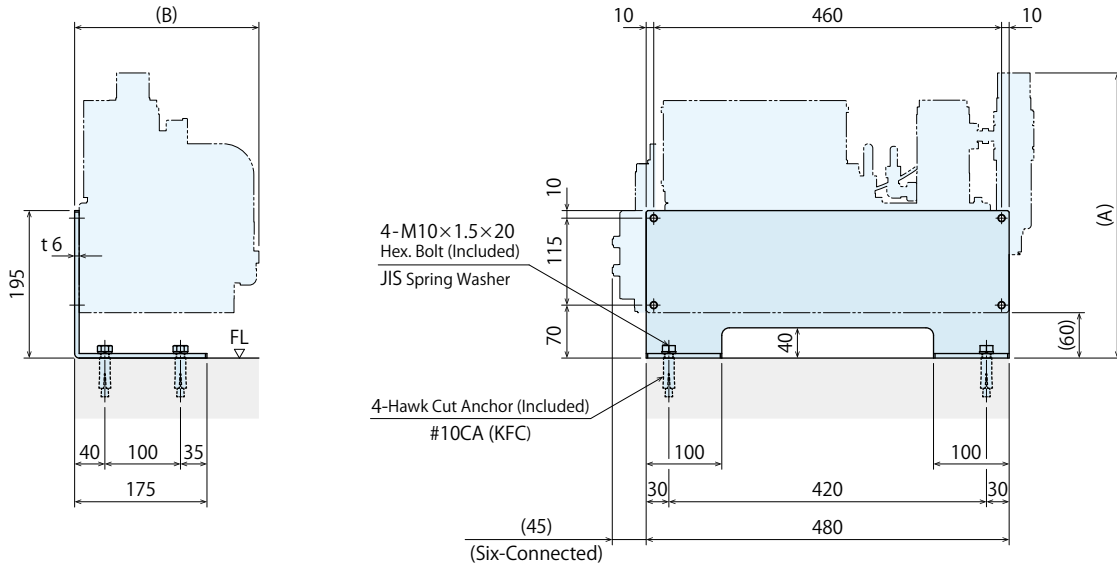
External Dimensions : CPSR000 (Anti-Vibration Rubber)



(mm)

Hydraulic Unit Model No.	Dimension A
CPB	317
CPD	337
CPC	385
CPE	420

External Dimensions : CPSV000 (Floor Mounted)



Hydraulic Unit Model No.	Dimension A	Dimension B
CPB	377	244
CPD	397	244
CPC	445	244
CPE	480	244

Clamp • Unit
Operation Panel
Control Unit

Die Lifter
Pre-Roller

Accessories

Cautions
Company Profile

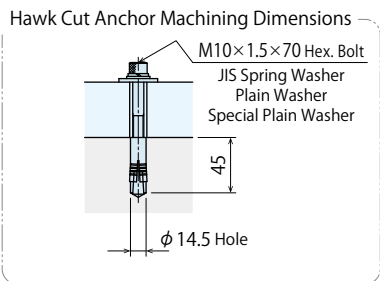
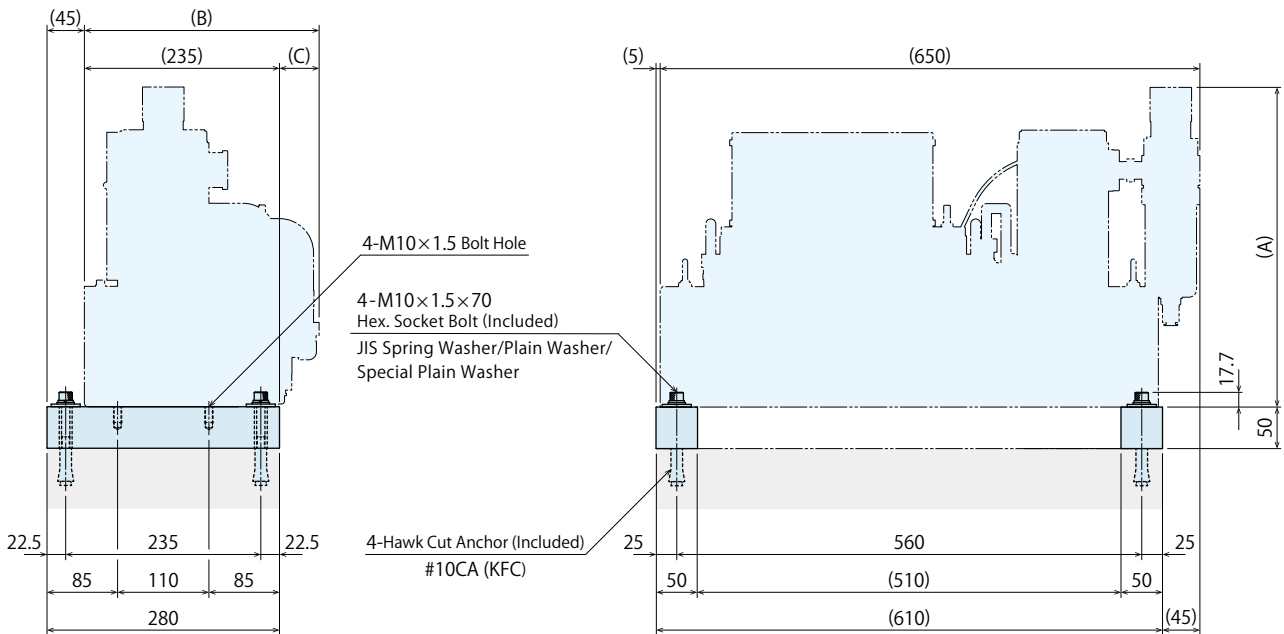
Clamp

- GA
- GD
- GBB
- GBC
- GBE
- GBF
- GBP
- GBQ
- GN
- GHA

Hydraulic Unit

- CP
- CR
- CPB
- CPD
- CPC
- CPE
- CQC
- CQE

External Dimensions : CQSV000 (Floor Mounted)



Hydraulic Unit Model No.	Dimension A	Dimension B	Dimension C
CQC	385	283	48
CQE	420	283	48

Pump Unit

- CB
- CD
- CC

Valve Unit

- BC
- BH
- MV

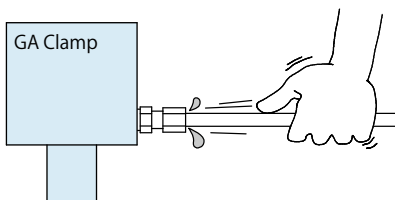
Operation Panel
Control Unit

- YP
- YAA

● Cautions

● Installation Notes (Cautions for Hydraulic Series)

- 1) Check the Usable Fluid
 - Please use the appropriate fluid by referring to the Hydraulic Fluid List.
 - If viscosity grade of hydraulic oil is higher than ISO-VG-32, action time becomes longer.
 - If using it at low temperature, action time will be longer because the viscosity of hydraulic oil becomes higher.
- 2) Procedure before Piping
 - Pipelines, piping connectors and others should be cleaned by thorough flushing.
 - Dust and cutting chips in the circuit may lead to fluid leakage and malfunction.
 - Our products except some valves are not equipped with protective function that prevents contamination.
- 3) Applying Sealing Tape
 - Wrap with tape 1 to 2 times following the screw direction.
 - Pieces of the sealing tape can lead to fluid leakage and malfunction.
 - Please implement piping construction in a clear environment to prevent anything getting in products.
- 4) Air Bleeding of the Hydraulic Circuit
 - If the hydraulic circuit has excessive air, the action time may become very long. If air enters the circuit after connecting the hydraulic port or under the condition of no air in the oil tank, please perform the following steps.
 - ① Reduce hydraulic pressure to less than 2MPa.
 - ② Loosen the cap nut of pipe fitting closest to the clamp, RQA/RA Die Lifter by one full turn.
 - ③ Shake the pipeline to loosen the outlet of pipe fitting. Hydraulic fluid mixed with air comes out.



- ④ Tighten the cap nut after air bleeding.
 - ⑤ It is more effective to release air at the highest point inside the circuit or at the end of the circuit.
- 5) Checking Looseness and Retightening
 - At the beginning of the machine installation, the bolt and nut may be tightened lightly. Check the looseness and re-tighten as required.

● Hydraulic Fluid List

Maker	ISO Viscosity Grade ISO-VG-32	
	Anti-Wear Hydraulic Oil	Multi-Purpose Hydraulic Oil
Showa Shell Sekiyu	Tellus S2 M 32	Morlina S2 B 32
Idemitsu Kosan	Daphne Hydraulic Fluid 32	Daphne Super Multi Oil 32
JX Nippon Oil & Energy	Super Hyrando 32	Super Mulpus DX 32
Cosmo Oil	Cosmo Hydro AW32	Cosmo New Mighty Super 32
ExxonMobil	Mobil DTE 24	Mobil DTE 24 Light
Matsumura Oil	Hydol AW-32	
Castrol	Hyspin AWS 32	

Note : Please contact manufacturers when customers require products in the list above.

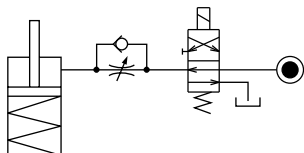
● Notes on Hydraulic Cylinder Speed Control Unit



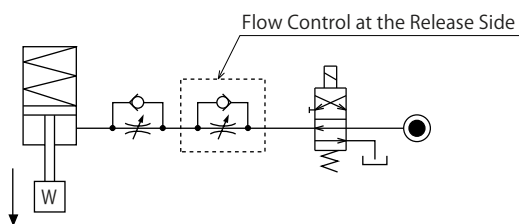
Please pay attention to the cautions below. Design the hydraulic circuit for controlling the action speed of hydraulic cylinder. Improper circuit design may lead to malfunctions and damages. Please review the circuit design in advance.

● Flow Control Circuit for Single Acting Cylinder

For spring return single-acting cylinders, restricting flow during release can extremely slow down or disrupt release action. The preferred method is to control the flow during the lock action using a valve that has free-flow in the release direction. It is also preferred to provide a flow control valve at each actuator.



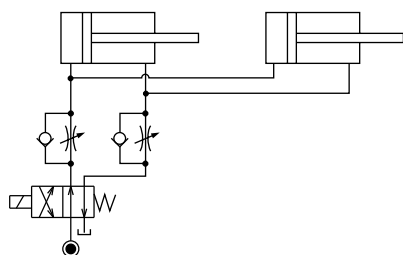
Accelerated clamping speed by excessive hydraulic flow to the cylinder may sustain damage. In this case add flow control to regulate flow.



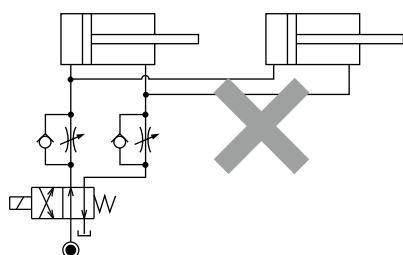
● Flow Control Circuit for Double-Acting Cylinder

Flow control circuit for double-acting cylinder should have meter-out circuits for both the lock and release sides. Meter-in control can have adverse effect by presence of air in the system.

【Meter-out Circuit】

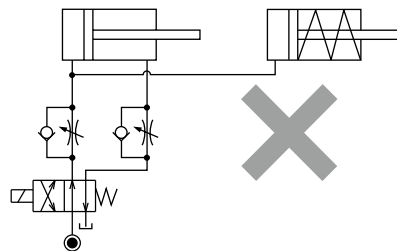


【Meter-in Circuit】



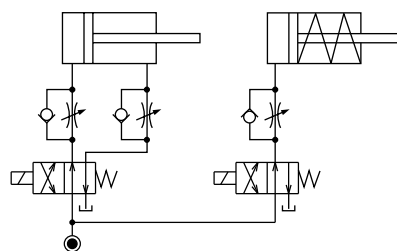
In the case of meter-out circuit, the hydraulic circuit should be designed with the following points.

- ① Single-acting components should not be used in the same flow control circuit as the double acting components. The release action of the single-acting cylinders may become erratic or very slow.

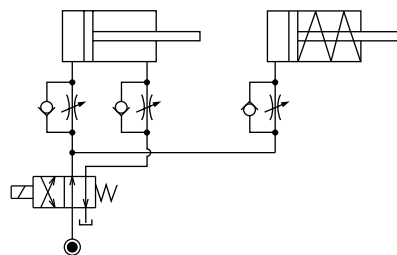


Refer to the following circuit when both the single-acting cylinder and double-acting cylinder are used together.

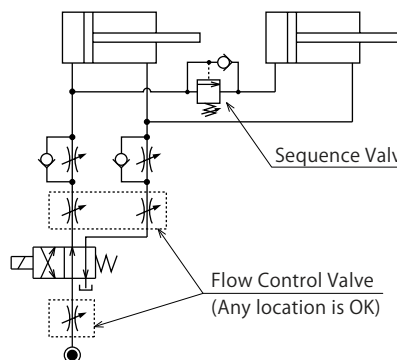
- Separate the control circuit.



- Reduce the influence of double-acting cylinder control unit. However, due to the back pressure in tank line, single-acting cylinder is activated after double-acting cylinder works.



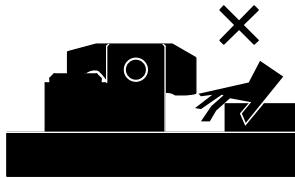
- ② In the case of meter-out circuit, the inner circuit pressure may increase during the cylinder action because of the fluid supply. The increase of the inner circuit pressure can be prevented by reducing the supplied fluid beforehand via the flow control valve. Especially when using sequence valve or pressure switches for clamping detection. If the back pressure is more than the set pressure then the system will not work as it is designed to.



ⓘ Cautions

● Notes on Handling

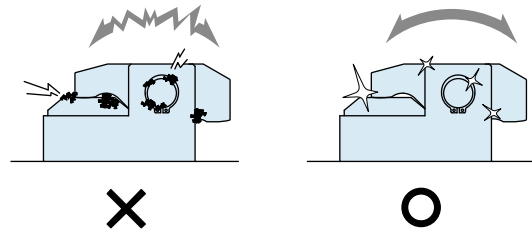
- 1) It should be operated by qualified personnel.
 - Hydraulic products, machines and devices should be operated and maintained by qualified personnel.
- 2) Do not operate or remove the product unless the safety protocols are ensured.
 - ① The machine and equipment can only be inspected or prepared when it is confirmed that the safety devices are in place.
 - ② Before the product is removed, make sure that the above-mentioned safety devices are in place. Shut off the pressure and power source, and make sure no pressure exists in the hydraulic and air circuits.
 - ③ After stopping the product, do not remove until the temperature drops.
 - ④ Make sure there is no abnormality in the bolts and respective parts before restarting the machine or equipment.
- 3) Do not touch a clamp (cylinder) while it is working. Otherwise, your hands may be injured.



- 4) Do not disassemble or modify.
 - If the product is taken apart or modified, the warranty will be voided even within the warranty period.

● Maintenance • Inspection

- 1) Removal of the Product and Shut-off of Pressure Source
 - Before removing the product, make sure that safety devices are in place. Shut off the pressure and power source, and make sure no pressure exists in the air and hydraulic circuits.
 - Make sure there is no abnormality in the bolts and respective parts before restarting.
- 2) Regularly clean the area around the product.
 - If it is used when the surface is contaminated with dirt, it may lead to packing seal damage, malfunctioning and fluid leakage.



- 3) If disconnecting by couplers, air bleeding should be carried out on a regular basis to avoid air mixed in the circuit.
- 4) Regularly tighten bolts, pipe line, mounting bolt, nut, snap ring, cylinder and others to ensure proper use.
- 5) Make sure the hydraulic fluid has not deteriorated.
- 6) Make sure there is a smooth action without an irregular noise.
 - Especially when it is restarted after left unused for a long period, make sure it can be operated correctly.
- 7) The products should be stored in the cool and dark place without direct sunshine or moisture.
- 8) Please contact us for overhaul and repair.

● Warranty

1) Warranty Period

- The product warranty period is 18 months from shipment from our factory or 12 months from initial use, whichever is earlier.

2) Warranty Scope

- If the product is damaged or malfunctions during the warranty period due to faulty design, materials or workmanship, we will replace or repair the defective part at our expense. Defects or failures caused by the following are not covered.

- ① If the stipulated maintenance and inspection are not carried out.
- ② If the product is used while it is not suitable for use based on the operator's judgment, resulting in defect.
- ③ If it is used or operated in an inappropriate way by the operator. (Including damage caused by the misconduct of the third party.)
- ④ If the defect is caused by reasons other than our responsibility.
- ⑤ If repair or modifications are carried out by anyone other than Kosmek, or without our approval and confirmation, it will void warranty.
- ⑥ Other caused by natural disasters or calamities not attributable to our company.
- ⑦ Parts or replacement expenses due to parts consumption and deterioration. (Such as rubber, plastic, seal material and some electric components.)

Damages excluding from direct result of a product defect shall be excluded from the warranty.

Clamp • Unit
Operation Panel
Control Unit

Die Lifter
Pre-Roller

Accessories

Cautions
Company Profile

Cautions

Installation Notes
(For Hyd. Series)

Hydraulic
Fluid List

Notes on Hyd. Cylinder
Speed Control Unit

Notes on
Handling

Maintenance /
Inspection

Warranty

Company Profile

Our Products

Company Profile

History

Sales Offices

Sales Offices

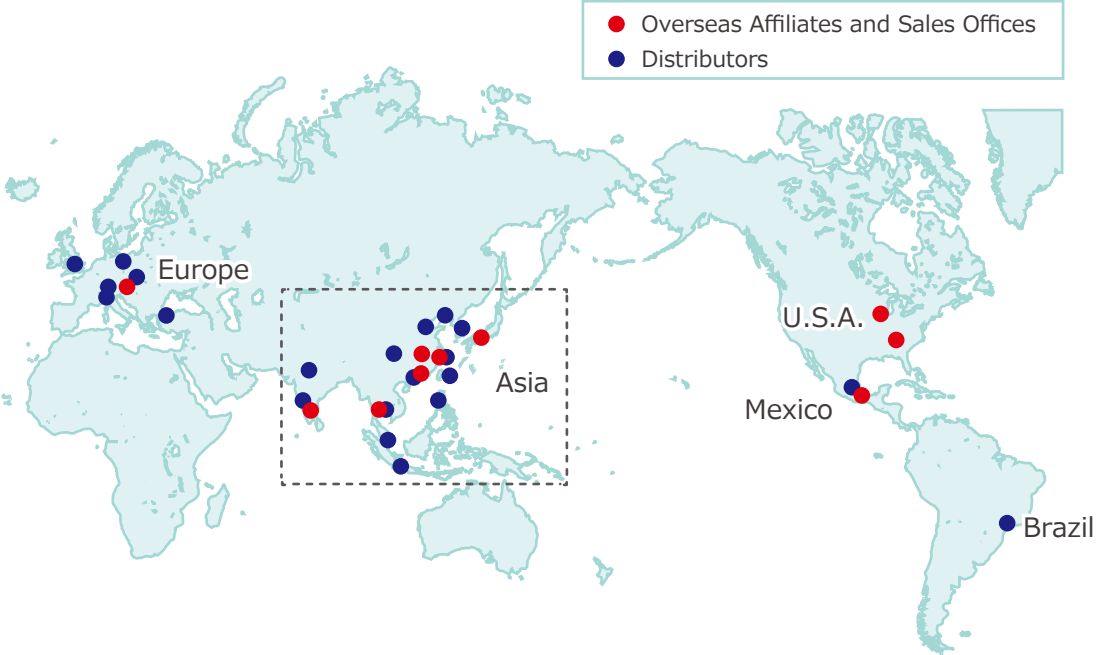
Sales Offices across the World

Japan	KOSMEK LTD. HEAD OFFICE	TEL. +81-78-991-5162 FAX. +81-78-991-8787 1-5, 2-chome, Murotani, Nishi-ku, Kobe-city, Hyogo, Japan 651-2241
USA	KOSMEK (USA) LTD. Overseas Subsidiary	TEL. +1-630-620-7650 FAX. +1-630-620-9015 650 Springer Drive, Lombard, IL 60148 USA
	KOSMEK USA ATLANTA BRANCH OFFICE	TEL. +1-630-620-7650 303 Perimeter Center North, Suite 300, Atlanta, GA 30346 USA
Mexico	KOSMEK USA MEXICO BRANCH OFFICE	TEL. +52-442-851-1377 Av. Loma Pinal de Amoles 320-piso PH oficina 504 interior 13, Vista Dorada, 76060 Santiago de Querétaro, Qro. Mexico
Europe	KOSMEK EUROPE GmbH Overseas Subsidiary	TEL. +43-463-287587 FAX. +43-463-287587-20 Schleppeplatz 2 9020 Klagenfurt am Wörthersee Austria
China	KOSMEK (CHINA) LTD. Overseas Subsidiary	TEL.+86-21-54253000 FAX. +86-21-54253709 Room601, RIVERSIDE PYRAMID No.55, Lane21, Pusan Rd, Pudong Shanghai China
	KOSMEK (CHINA) LTD. Dongguan Office Overseas Subsidiary (Sales Office)	TEL.+86-769-85300880 Room 603, Xinchuang Power Building (No. 122-1 West Houjie Avenue), Houjie Town, Dongguan City, Guangdong Province, China
	KOSMEK (CHINA) LTD. Wuhan Office Overseas Subsidiary (Sales Office)	TEL.+86-15802172393 Room 309, Chuanggu Technology Building, 266 Taizihu Rd, Zhuankou Subdistrict, Caidian District, Wuhan 430056, Hubei Province, China
India	KOSMEK LTD. - INDIA Branch	TEL. +91-9880561695 4A/Old No:649, Ground Floor, 4th D cross, MM Layout, Kavalbyrasandra, RT Nagar, Bangalore -560032 India
Thailand	KOSMEK Thailand Representative Office Representative Office	TEL. +66(0)2-059-2010 No.139, Blue Chips Building, 4th Floor, Room No.422, Soi Sukhumvit 63 (Thong Lor 10), Sukhumvit Road, Khlong Tan Nuea, Wattana, Bangkok 10110, Thailand
Taiwan	FULL LIFE TRADING CO., LTD. Distributor	TEL. +886-2-82261860 FAX. +886-2-82261890 16F-4, No.2, Jian Ba Rd., Zhonghe District, New Taipei City Taiwan 23511
Philippines	G.E.T. Inc, Phil. Distributor	TEL.+63-2-310-7286 FAX. +63-2-310-7286 Victoria Wave Special Economic Zone Mt. Apo Building, Brgy. 186, North Caloocan City, Metro Manila, Philippines 1427
Indonesia	PT. Yamata Machinery Sales Distributor	TEL. +62-21-29628607 FAX. +62-21-29628608 Delta Commercial Park I, Jl. Kenari Raya B-08, Desa Jayamukti Kec. Cikarang Pusat Kab. Bekasi 17530 Indonesia

Sales Offices in Japan

Head Office Osaka Sales Office Overseas Sales	TEL. 078-991-5162 FAX. 078-991-8787 1-5, 2-chome, Murotani, Nishi-ku, Kobe-city, Hyogo, 651-2241, Japan
Tokyo Sales Office	TEL. 048-652-8839 FAX. 048-652-8828 81, 4-chome, Onari-cho, Kita-ku, Saitama City, Saitama, 331-0815, Japan
Nagoya Sales Office	TEL. 0566-74-8778 FAX. 0566-74-8808 10-1, 2-chome, Misono-cho, Anjo City, Aichi, 446-0076, Japan
Fukuoka Sales Office	TEL. 092-433-0424 FAX. 092-433-0426 8-10-101, 1-chome, Kamimuta, Hakata-ku, Fukuoka City, Fukuoka, 812-0006, Japan

Global Network



Asia Detailed Map



● FOR FURTHER INFORMATION ON UNLISTED SPECIFICATIONS AND SIZES, PLEASE CALL US.
 ● SPECIFICATIONS IN THIS CATALOG ARE SUBJECT TO CHANGE WITHOUT NOTICE.

